

147 Water Rail

Put your logo here



Water Rail. Spring. Adult (06-VI).

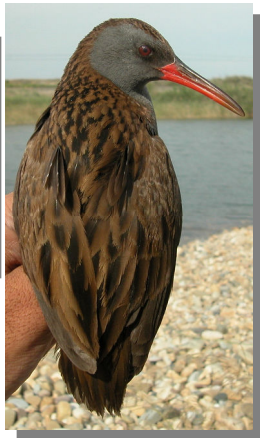
WATER RAIL (*Rallus aquaticus*)

IDENTIFICATION

25-28 cm. **Adult** brown reddish upperparts, with dark streaks; grey slate chin and breast; grey belly streaked white; dark flank streaked pale; white undertail coverts with reddish edges; long and reddish bill darker on base. **Juvenile** paler; pale supercilium; whitish underparts spotted brownish; pale brown bill



Water Rail. Pattern of breast and upperparts.



SIMILAR SPECIES

Long and red bill makes this species unmistakable.

SEXING

Plumage of both sexes alike. Size can be an useful characteristic with most of the specimens: **male** with wing longer than 120 mm; tarsus longer than 40 mm. **Female** with wing shorter than 115 mm; tarsus shorter than 37 mm.

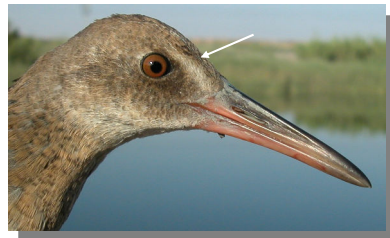
AGEING

3 age groups can be recognized:

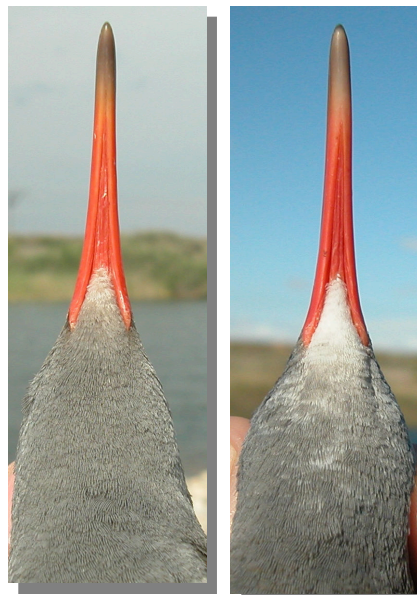
Juvenile with white-buff breast, chin and supercilium; iris and bill pale brown.

1st year autumn/2nd year spring similar to **adult** but with a pale brown streak running from base of upper mandible to upper part of eye; chin and throat white or light grey; iris orange-brown; sometimes with juvenile brown feathers retained on breast; **juvenile** flight feathers retained that will be heavily worn in **spring**. **CAUTION:** some individuals may be indistinguishable from **adults**.

Adult with breast and underparts slate grey; chin slate grey or whitish shading into plain slate grey; reddish iris; bill dark with edges and base bright red.



Water Rail. Ageing. Pattern of head and streak on the eye: top adult; middle 1st year; bottom juvenile.



Water Rail. Ageing. Pattern of chin: left adult; right 2nd year.

147 Water Rail

Put your logo here

MOULT

Complete **postbreeding** moult, usually finished in September. Partial **postjuvenile** moult involving body feathers and, sometimes, tail feathers; often finished in October. Both age classes have a **prebreeding** moult confined to body feathers.

PHENOLOGY

I	II	III	IV	V	VI	VII	VIII	IX	X	XI	XII

STATUS EN ARAGON

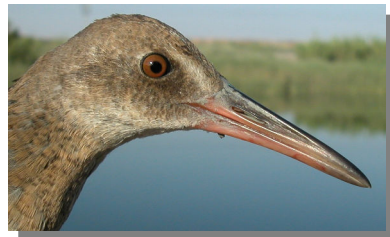
Resident, distributed in Gallocanta, Canal de Berdun and rivers Ebro, Jalon and Piedra.



Water Rail. Spring. Young (14-VII)



Water Rail. Spring. 2nd year (14-V)



Water Rail. Spring. Head pattern and iris colour. From top to bottom: adult (06-VI); 2nd year (14-V); juvenile (14-VII); young (14-VII).



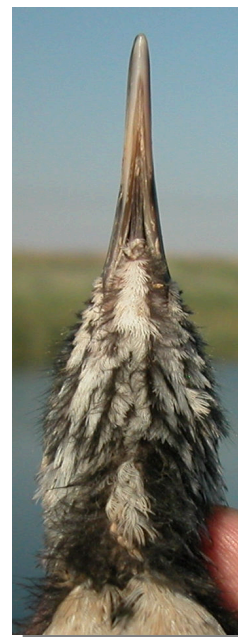
Water Rail. Spring. Juvenile (14-VII)

147 Water Rail

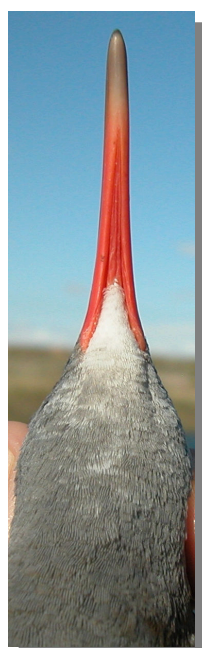
Put your logo here



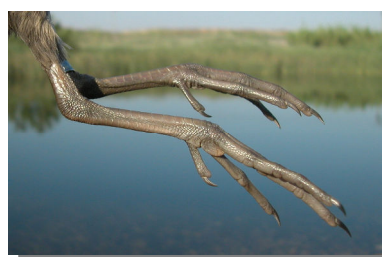
Water Rail. Spring. Breast pattern: top adult (06-VI); middle 2nd year (14-V); bottom juvenile (14-VII).



Water Rail. Spring. Chin pattern: left juvenile (14-VII); right young (14-VII).



Water Rail. Spring. Chin pattern: left adult (06-VI); right 2nd year (14-V).



Water Rail. Spring. Pattern of legs. From top to bottom: adult (06-VI); 2nd year (14-V); juvenile (14-VII); young (14-VII).

147 Water Rail

Put your logo here



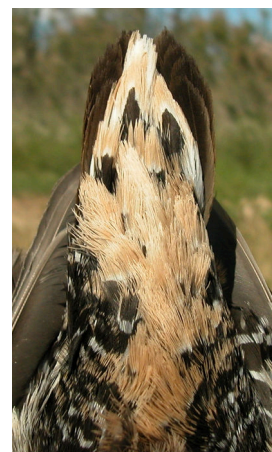
Water Rail. Spring. Flank pattern: top adult (06-VI); middle 2nd year (14-V); bottom juvenile (14-VII).



Water Rail. Spring. Upperpart pattern: top left adult (06-VI); top right 2nd year (14-V); left juvenile (14-VII).



Water Rail. Spring. Tail pattern: top left adult (06-VI); top right 2nd year (14-V); left juvenile (14-VII).



Water Rail. Spring. Pattern of undertail coverts: top left adult (06-VI); top right 2nd year (14-V); left juvenile (14-VII).

147 Water Rail

Put your logo here



Water Rail. Spring. Adult: pattern of primaries (06-06).



Water Rail. Spring. Juvenile: pattern of primaries (14-14).



Water Rail. Spring. 2nd year: pattern of primaries (14-14).



Water Rail. Spring. Adult: pattern of secondaries (06-06).



Water Rail. Spring. 2nd year: pattern of secondaries (14-14).

147 Water Rail

Put your logo here



Water Rail. Spring. Juvenile: pattern of secondaries (14-VII).



Water Rail. Spring. Juvenile: pattern of wing (14-VII).



Water Rail. Spring. Adult: pattern of wing (06-VI).



Water Rail. Autumn. Adult (02-IX).



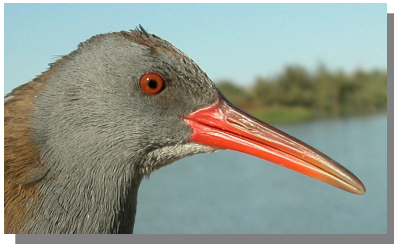
Water Rail. Spring. 2nd year: pattern of wing (14-V).



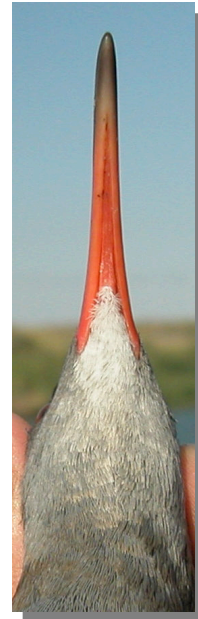
Water Rail. Autumn. 1st year (27-VIII).

147 Water Rail

Put your logo here



Water Rail. Autumn. Head pattern: top adult (02-IX); bottom 1st year (27-VIII).



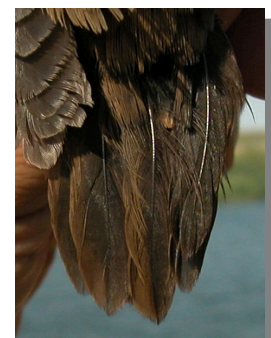
Water Rail. Autumn. Chin pattern: left adult (02-IX); right 1st year (27-VIII).



Water Rail. Autumn. Breast pattern: top adult (02-IX); bottom 1st year (27-VIII).



Water Rail. Autumn. Upperpart pattern: left adult (02-IX); right 1st year (27-VIII).



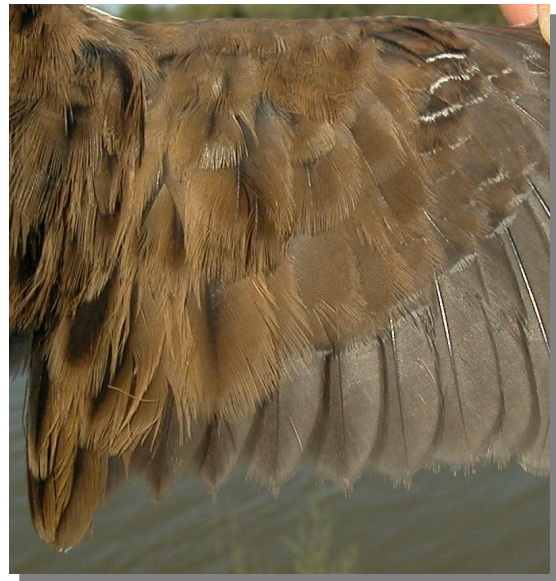
Water Rail. Autumn. Tail pattern: left adult (02-IX); right 1st year (27-VIII).

147 Water Rail

Put your logo here



Water Rail. Autumn. Flank pattern: top adult (02-IX); bottom 1st year (27-VIII).



Water Rail. Autumn. Adult: pattern of secondaries (02-IX)



Water Rail. Autumn. Adult: pattern of primaries (02-IX)



Water Rail. Autumn. 1st year: pattern of secondaries (27-VIII)



Water Rail. Autumn. 1st year: pattern of primaries (27-VIII)

147 Water Rail

Put your logo here



Water Rail. Autumn. Adult: pattern of wing (02-IX)



Water Rail. Autumn. 1st year: pattern of wing (27-VIII)